

EMERGENCY LIGHT Portable Light



**Supreme
Creation**

Light when you needed...

Portable
Non-Maintained
Lights



Model No . 106 LED / NM
5 & 2 Hrs. Back up

Non - Maintained
Lights



Model No . 118 / 218 LED / NM
4 & 2 Hrs. Back up

Non - Maintained
Lights



Model No . 218 / 418 LED / NM
2 & 1 Hrs. Backup

Weather Proof
Lights



Model No . IP 65 / EM
2 & 1 Hrs. Backup

Triangle Sign
Lights



Non - Maintained
4 Hrs. Back up



Beam Lights
Model No . 109 LED / BL
8 Hrs. Back up



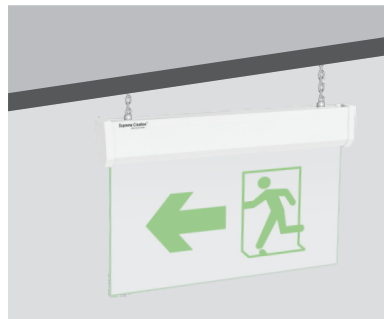
Twin Beam Lights
Model No . 209 L / 225 H / NM
6 & 1 1/2 Hrs. Back up



Portable Non - Maintained Multi Lights
Model No . 209 L / 225 H / ML
6 & 1 1/2 Hrs. Back up



Portable Non - Maintained Multi Lights
Model No . 209 L / 225 H / ML
6 & 1 1/2 Hrs. Back up



Sleek Exit / Egress (Edgelit) Lights
Model No . 106 E/M/ S - 106 E/ NE
6 Hrs. Back up



Sleek Exit / Egress (Edgelit) Lights
Model No . 106 EM/RM - 106 E/ NE/RM
6 Hrs. Back up



Sleek Exit / Egress (Edgelit) Lights
Model No . 106 EM/RM - 106 E/ NE/RM
6 Hrs. Back up



Sleek Exit / Egress (Edgelit) Lights
Model No . 106 EM/RM - 106 E/ NE/RM
6 Hrs. Back up



Self Contained Rechargeable Emergency



Decorative Exit / Egress Lights



Model No . 112 E/M - 112 N/M
4 Hrs. Back up

Auditorium Series Exit Lights



Model No . 112 EM/A
4 Hrs. Back up

Decorative Exit / Egress Lights



Model No . 112 ER / RM
4 Hrs. Back up

Auditorium Series Exit Lights



Model No . 112 EM/RM/A
4 Hrs. Back up

Triangle Direction Light



Non - Maintained
8 Hrs. Back up



Sleek Exit / Egress Lights
Model No . 106 E/M/ S
6 Hrs. Back up



Sleek Exit / Egress Lights
Model No . 106 E/M/ S
6 Hrs. Back up

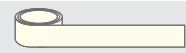


Sleek Exit / Egress Lights
Model No . 106 E/M/ S
6 Hrs. Back up

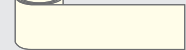
Tapes

*These signs are used in identification of escape route, fire equipment, zone marking, handrail marking, safe conditions etc.

T 01
Size:
40mmX10Mtr .



T 02
Size:
80mmX10Mtr .



VINYL TAPE
Emergency equipment marking
Handrail identification Stair
identification

T 03
Size:
40mmX10Mtr .



T 04
Size:
80mmX10Mtr .



WAY FINDING TYPE
(Low location lighting) Directional route
marking Way finding, supplied with left and
right handed decals to allow tape to indicate
either direction

T 05
Size:
40mmX10Mtr .



T 06
Size:
80mmX10Mtr .



ARROW TAPE
Way finding or
Escape Direction

T 07
Size:
40mmX10Mtr .



T 08
Size:
80mmX10Mtr .



GREEN DIAGONAL TAPE
Marking safe areas Exit door
highlighting Escape identification

T 09
Size:
40mmX10Mtr .



T 10
Size:
80mmX10Mtr .



BLACK DIAGONAL TAPE
Danger zone marking Obstacle
marking

T 11
Size:
40mmX10Mtr .



T 12
Size:
80mmX10Mtr .



RED DIAGONAL TAPE
Highlighting fire fighting equipment
Hazard marking

T 13
Size:
40mmX10Mtr .



T 14
Size:
80mmX10Mtr .



ARROW TAPE
Way finding or Escape Direction

T 15
Size:
40mmX10Mtr .



T 16
Size:
80mmX10Mtr .

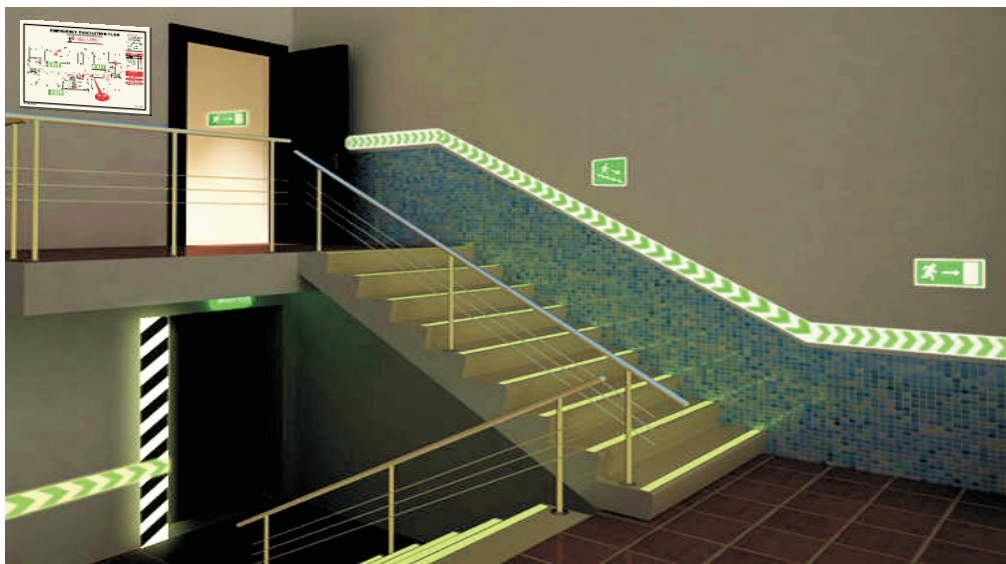


WAY FINDING TYPE
(Low location lighting) Directional
route marking Way finding, supplied
with left and right handed decals to
allow tape to indicate either direction

Photoluminescent antiskid tapes



T 17
Size:
50mmX10Mtr .



FIRE SAFETY SIGNAGES

Prohibition



These signs are for means of prohibiting the action of different types which will help to avoid accidents.

Safety



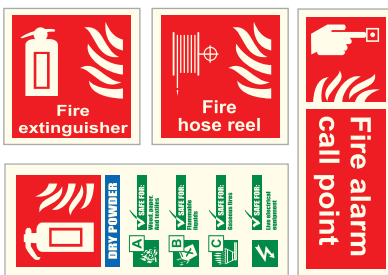
These signs are for means of safety indication of safe measures.

Direction



These signs are safety way guidance system (SWGS). They are means of escape where the way leads to the safe conditions and alternative means of escape from most difficult situations.

Fire Equipment



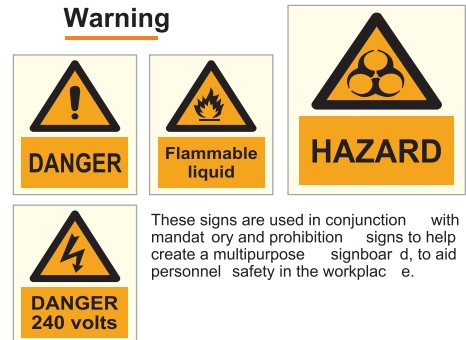
These signs are meant for identifying appropriate type of Fire equipments for different type of fire & fire actions.

Mandatory



These signs are for means of mandatory notices which are an important part in maintenance of the means of escape.

Warning



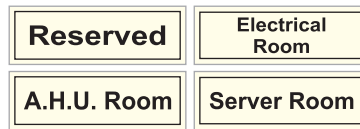
These signs are used in conjunction with mandatory and prohibition signs to help create a multipurpose signboard, to aid personnel safety in the workplace.

Combination



These signs are used in combination of different measures like Fire Equipment, Prohibition and Safety.

General



These signs are for means of safety indication of safe measures which are especially used in accommodation areas.

Aqua Safety



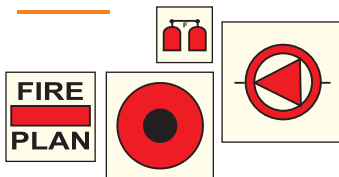
These signs are for means of safety indication of safe measures which are especially used on pool and sea side.

IMO Safety



These signs are for means of safety indication of safe measures which are especially used on ships or vessels.

IMO Fire Control



These signs are for means of fire control especially used on ships or vessels.

Deck & Engine Room



These signs are for means of safety indication of safe measures which are especially used in deck and engine room.

Passenger Vessel & Terminal

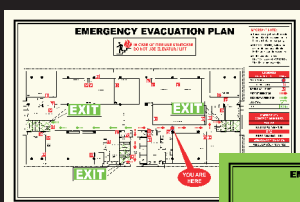


These signs are for means of identifying the locations in passenger terminals and vessels.

Dots (Route Markers)



These signs are used in identification of escape route, fire equipments, zone marking, handrail marking, safe conditions etc.



Day

EVACUATION PLAN

Night





Ideas, Creative, Innovation.

Transforming the future through ideas

A BEACON OF SAFETY SIGNAGES:

Supreme Creation stands out as a company committed to safety and innovation. They understand that in an unpredictable world, investing in safety signages and emergency lighting is not just a choice but a necessity. Let's take a closer look at how they excel in this domain:

CUTTING-EDGE TECHNOLOGY:

Supreme Creation is at the forefront of adopting cutting-edge technology in signage and emergency lighting. They recognize the power of innovation in enhancing safety and have integrated state-of-the-art photoluminescent materials into their products.

CUSTOM SOLUTIONS :

Every building and facility has unique requirements when it comes to safety signage. Supreme Creation excels in providing customized solutions that meet the specific needs of their clients. From digital signage to smart systems, they tailor their offerings to ensure optimal safety.

COMPLIANCE AND STANDARDS:

Supreme Creation understands the importance of compliance with safety standards and regulations. Their products not only meet but often exceed these standards, ensuring that clients can trust in the quality and effectiveness of their signage and emergency lighting solutions.

COMMUNITY IMPACT:

Supreme Creation is not just a business; it's a contributor to community safety. By providing top-notch safety solutions, they make a positive impact on the lives of individuals and the safety of entire communities.

INVESTING IN SAFETY : AN INVESTMENT IN PEACE OF MIND

In a world where uncertainty is a constant companion, investing in safety measures such as effective signage and emergency lighting is an investment in peace of mind. It's a proactive step toward ensuring the well-being of occupants, employees and visitors in any building or facility. When disaster strikes, those responsible for safety can rest assured that they have done everything possible to guide people to safety.

Safety signage and emergency lighting may not always be in the spotlight, but they play a vital role in ensuring safety and saving lives during emergencies. Their evolution from static signs to dynamic, glowing guides is a testament to human ingenuity and our commitment to safeguarding one another.

Supreme Creation, with its dedication to innovation, quality, and compliance, stands as a beacon of safety in the modern world. Their products and solutions exemplify the potential of technology to enhance emergency preparedness and response.

As we navigate an unpredictable future, let us remember that safety is not an option but a responsibility. By embracing the latest advancements in safety signage and emergency lighting, we illuminate the path to a safer, more secure world for all.



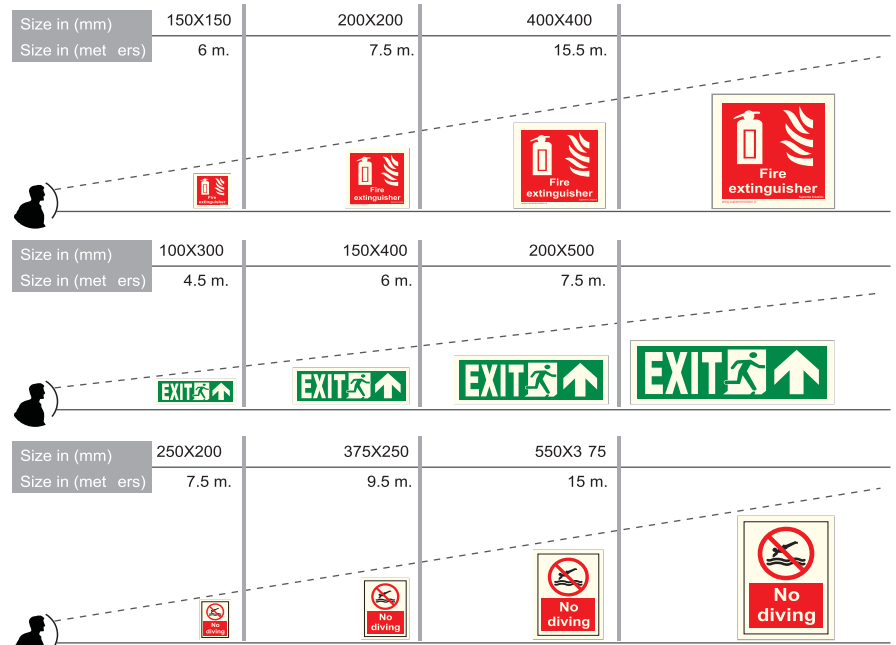
OUR CLIENTS



Eye View Recommended Sign Size



As another helpful addition to our [Resolution vs Size] post, here's a guide to decide on minimum text height at varying viewing distances.



*Note: these recommended sign sizes are based on normal lighting conditions of 100 lux.



Indian Standards & Codes

- IS 9457:2005
- IS 9583:1981
- IS 10322:2013
- IS 13716:1993
- IS 12407:1988
- IS 1644:1988
- IS 1646

Get In Touch !



D/O01, Sai Samarth Krupa CHS., Near Western Express Highway, Akurli Road, Kandivali East, Mumbai - 400101.



+91 91522 00534
+91 91522 0644 7



info.supremecreation@gmail.com



www.supremecreation.in

